

What works in Community Driven Development?

Emerging Findings from the Philippines' KALAHI-CIDSS Evaluation

Elisabeth King, Innovations for Poverty
Action & New York University

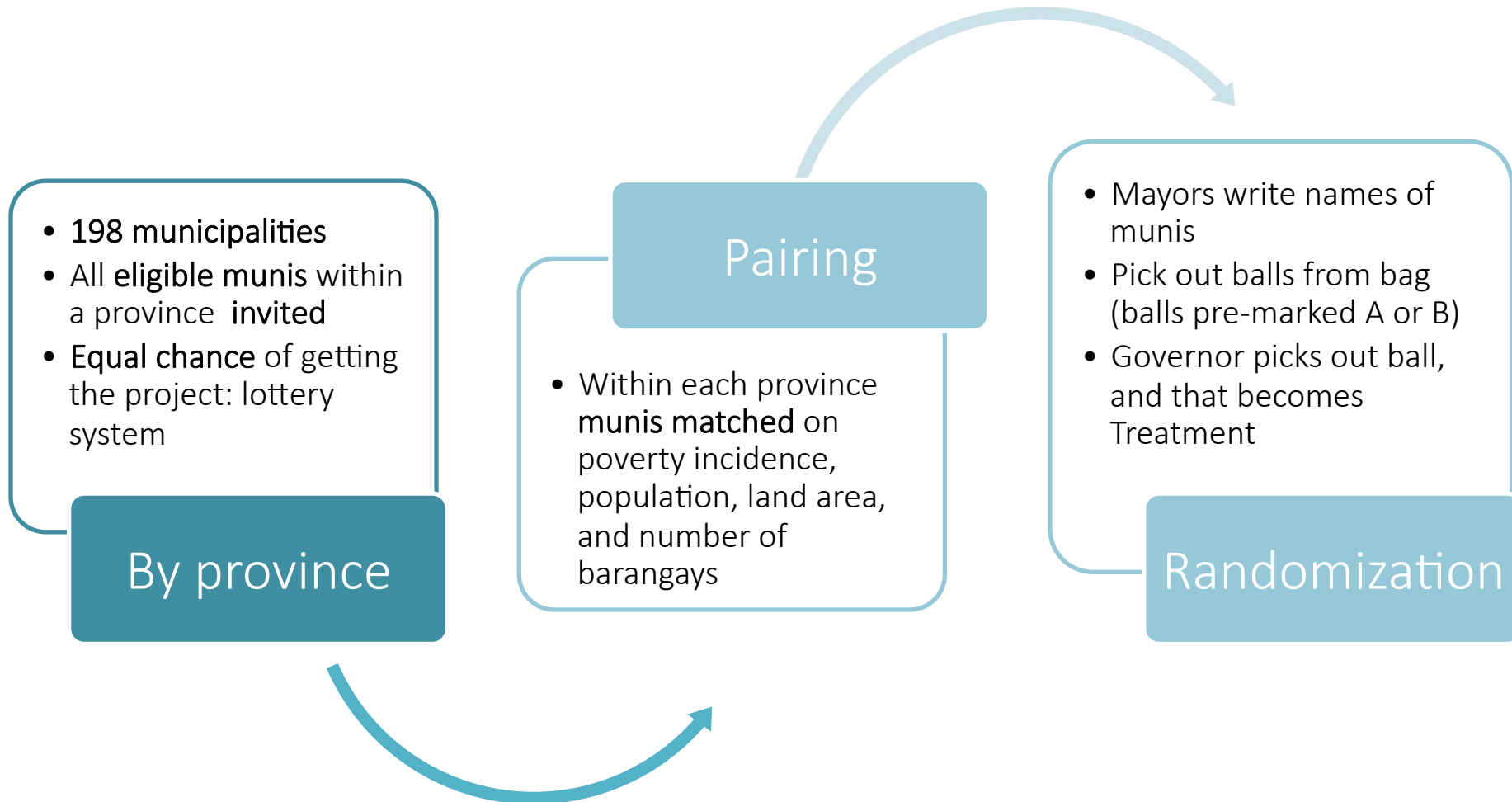
Ariel BenYishay
Amanda Beatty
Aniceto Orbeta
Menno Pradhan



Importance of CDD

- response to perceived failures of top-down, donor-driven development strategies in alleviating poverty (Pritchett & Woolcock, 2003)
- Many inter-related(?) goals
- The World Bank sponsors more than 400 CDD projects in 94 countries (Wong, 2012, p. iv) + many other donors and governments

Our study...Randomization was carried out in pairs based on socioeconomic characteristics



Three rounds of surveys took place over four years



● BASELINE
April to
June 2012

● INTERIM

February to June
2014



THIRD ROUND

July to October
2015



We surveyed nearly 6,000 households in the 1st and 3rd rounds

Baseline

- 198 munis
- 1 bgy / muni
- 30 HHs / bgy
- 5940 HHs

Interim

- 80 munis
- 1 bgy / muni
- 30 HHs / bgy
- 2400 HHs

Third Round

- 198 munis
- 1 bgy / muni
- 30 HHs / bgy
- 5940 HHs

We draw on six data sources

Data source	Number of respondents
Household survey	5,940 households
Structured Community Activity (SCA)	80 barangays Each barangay offered 15,000 PHP (300USD) as grant to address local public good
Municipal and local government officials survey	198 officials
KC ACTs and community facilitators survey	181 program facilitators
Barangay captains and officials survey	198 captains/officials
Qualitative FGDs	28 FGDs 3 rd round in 12 barangays

We analyze results across three domains

1. Socioeconomic
2. *Institutional*
3. *Community empowerment*

For each domain, we analyze intermediate and longer term outcomes

Pre-analysis plan: <https://www.socialscisceregistry.org/trials/171>

Fast-Track Institution Building in Conflict-Affected Countries? Insights from Recent Field Experiments

ELISABETH KING and CYRUS SAMII*
New York University, USA

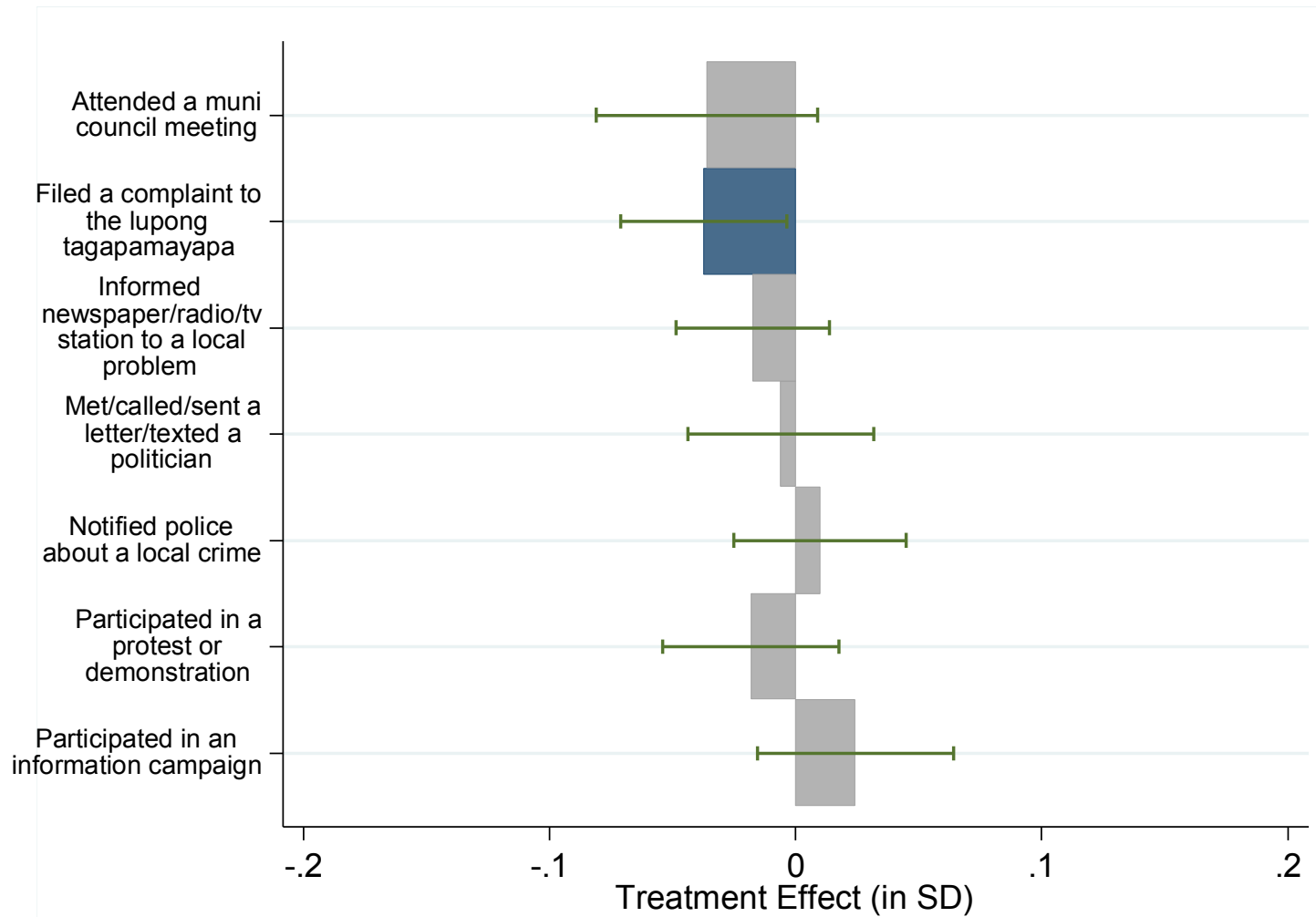
Hypothesis 1. The establishment and operation of community level CDD organizations broadens the base of participation in local development decision-making, providing the community a novel opportunity to work together equitably and cooperatively to generate material improvements that meet collectively agreed-upon needs.

Hypothesis 2. CDD generates learning-by-doing or demonstration effects that increase a community's capacity for inclusive and cooperative problem solving and collective action in a manner that is durable and transferable.

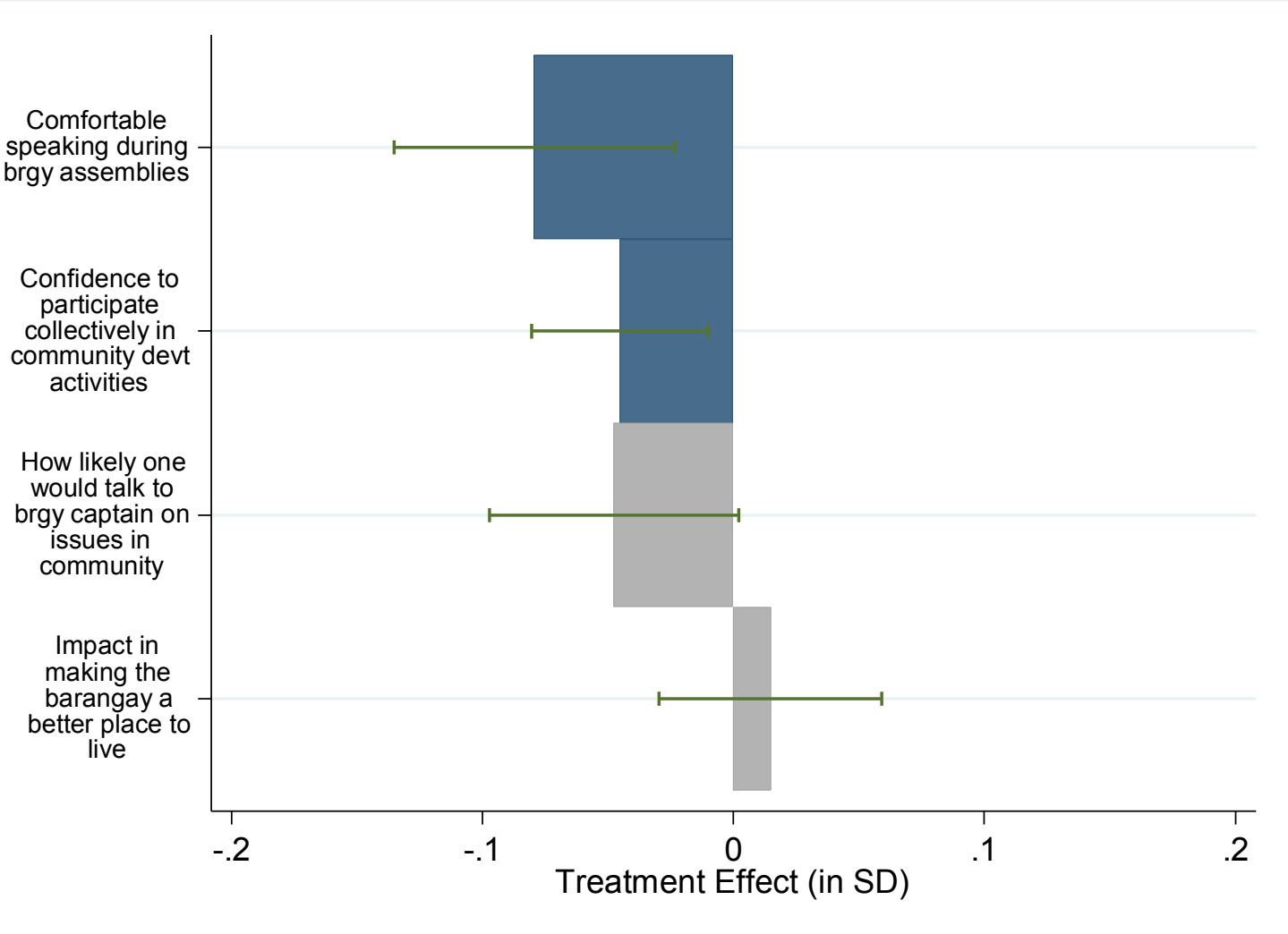
Select hypotheses & *emerging* findings

- **H3a:** KC increases participation in and knowledge of formal structures beyond KC
- **H3c:** KC increases confidence and self-efficacy beyond KC
- **H6:** KC increases interactions among peers
- **H8:** KC improves how well communities deal with natural disasters and other hardships

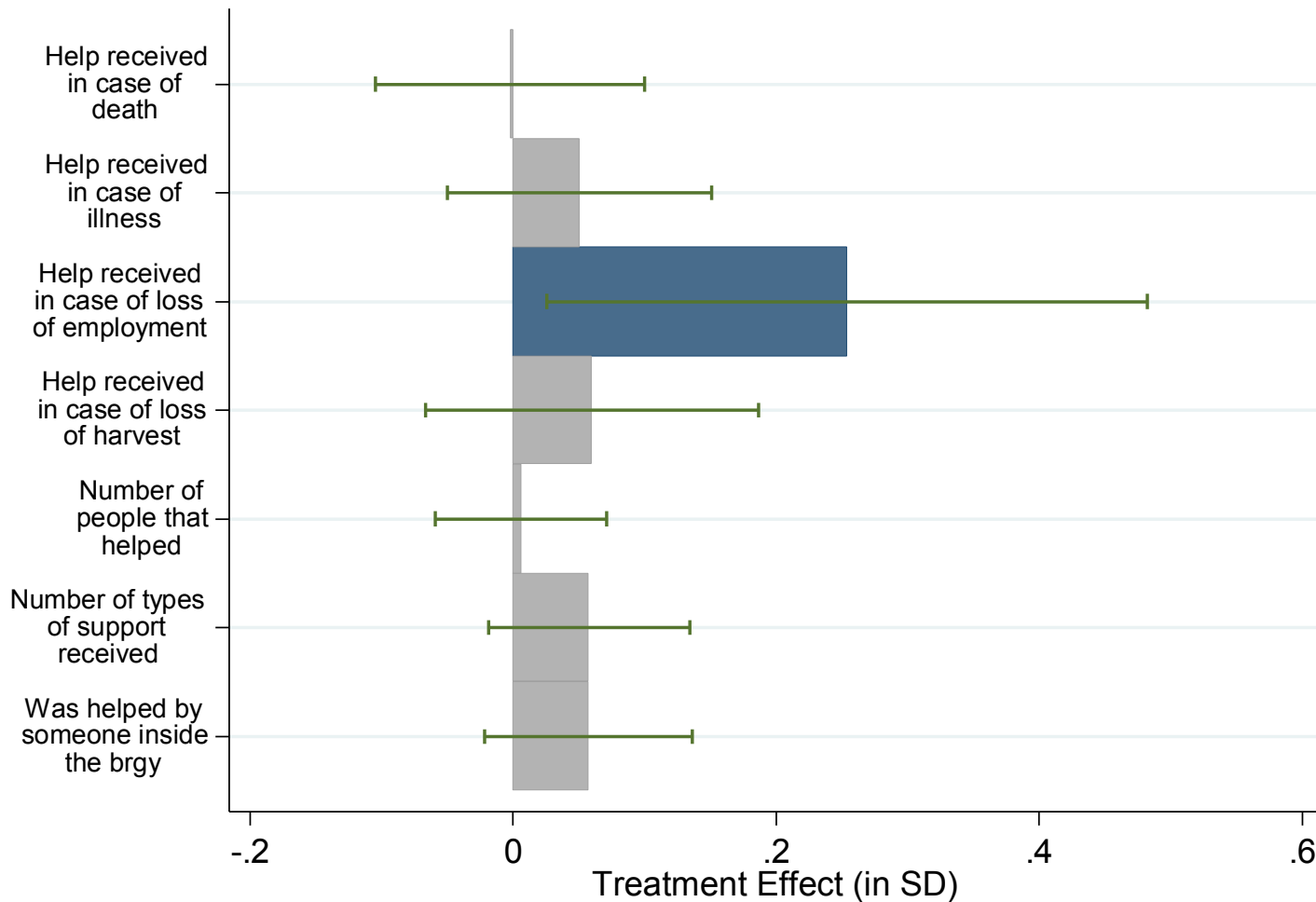
H3a. Participation & knowledge of formal structures beyond KC



H3c. Confidence and self-efficacy beyond KC



H8. How well communities deal with natural disasters and other hardships



Positioning our emerging findings...

- Still in process of analysis
- Other CDD evaluations – overall disappointing; more positive findings in socio-economic domain vs. institutional and community empowerment domains (see ie. King 2013; Mansuri & Rao 2012, etc.)
- Finding on disaster response interesting
- Further insights into results... Qualitative work

Wrapping up qualitative fieldwork...

- How can we explain the interim report finding that contributions to community decrease with treatment?
- Do residents report governance and participation gains from KC treatment that we may not have captured with the quantitative instruments?
- What mechanisms underlie differential gains in barangays with indigenous persons?
- What more can we learn about calamities (i.e. Yolanda) and our interim findings that Yolanda-affected treatment communities were better able to respond than Yolanda-affected control communities?



**THANK YOU!
SALAMAT PO!**

e.king@nyu.edu

Many thanks to
Agnese Carrera
Simon Gristed
and the wider IPA evaluation team
MCC, MCA-P & DSWD