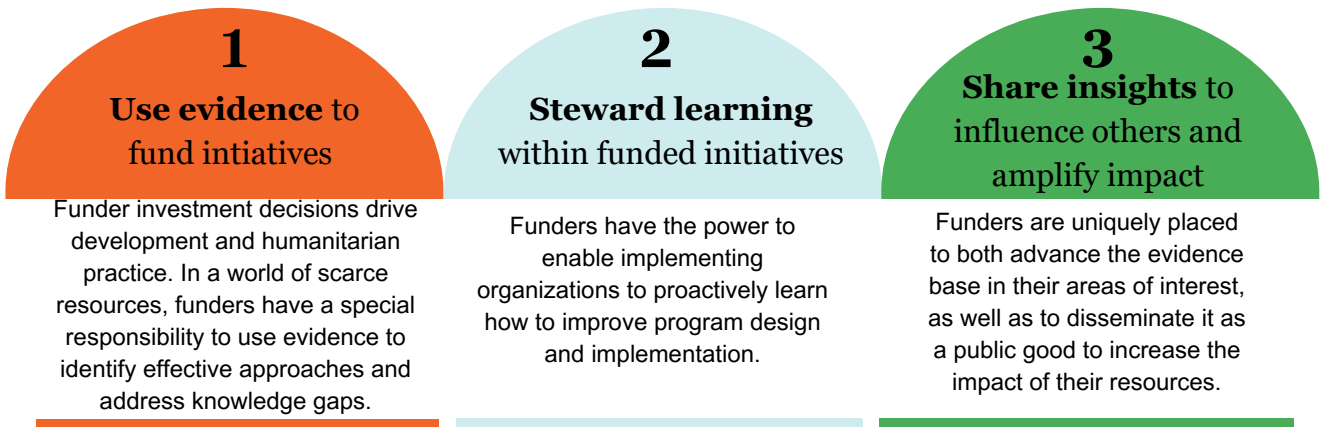


# Maximizing funder impact with the power of learning-oriented M&E

Funders face the challenge of ensuring their limited resources have the greatest social impact by funding the most cost-effective initiatives, and then sharing their knowledge to make sure their resources have a catalytic effect. The use of evidence by funders and their implementing partners is key, yet the habitual use of evidence remains a challenge, leading to unfulfilled impact potential.

For funders to maximize the impact of their initiatives and achieve influence in the development and humanitarian sectors, we recommend three key actions:



## Our offerings to funders

### Stage Specific Support



#### Initiative Design - Refinement

##### Common needs

- Evidence to design impactful initiatives
- Use grantee insights to improve initiatives

##### Our Services:

- Learning Agenda Development
- Evidence-based Initiative Design
- Data Use Plan

#### Grantmaking

##### Common needs

- Encourage learning with grantees
- Balance learning with accountability

##### Our Services:

- Reporting requirements evaluation
- Quality assessment of proposal MEL plans

#### Implementation

##### Common needs:

- Grantee MEL capability
- Dissemination of learnings (within initiatives and externally)

##### Our Services:

- Implementer Technical Assistance
- Community of Practice Facilitation
- Enhanced External Dissemination

### Broader Support

Bespoke support to address our partner's needs across their organization

##### Example services:

- MEL System Diagnostic
- Initiative-Wide Learning Partner

#### Right-Fit Evidence (RFE) Unit:

IPA's specialized technical advisory team rooted in IPA's philosophy of putting evidence to action and advancing what works to improve the lives of people living in poverty. RFE supports implementing organizations, government agencies, and funders on how to better use data and evidence to learn, adapt, and increase their programs' effectiveness.

To explore collaboration opportunities, please reach out to us at [rightfit@poverty-action.org](mailto:rightfit@poverty-action.org)

[www.poverty-action.org](http://www.poverty-action.org)

[Twitter](#)  
[LinkedIn](#)  
[Facebook](#)  
[YouTube](#)