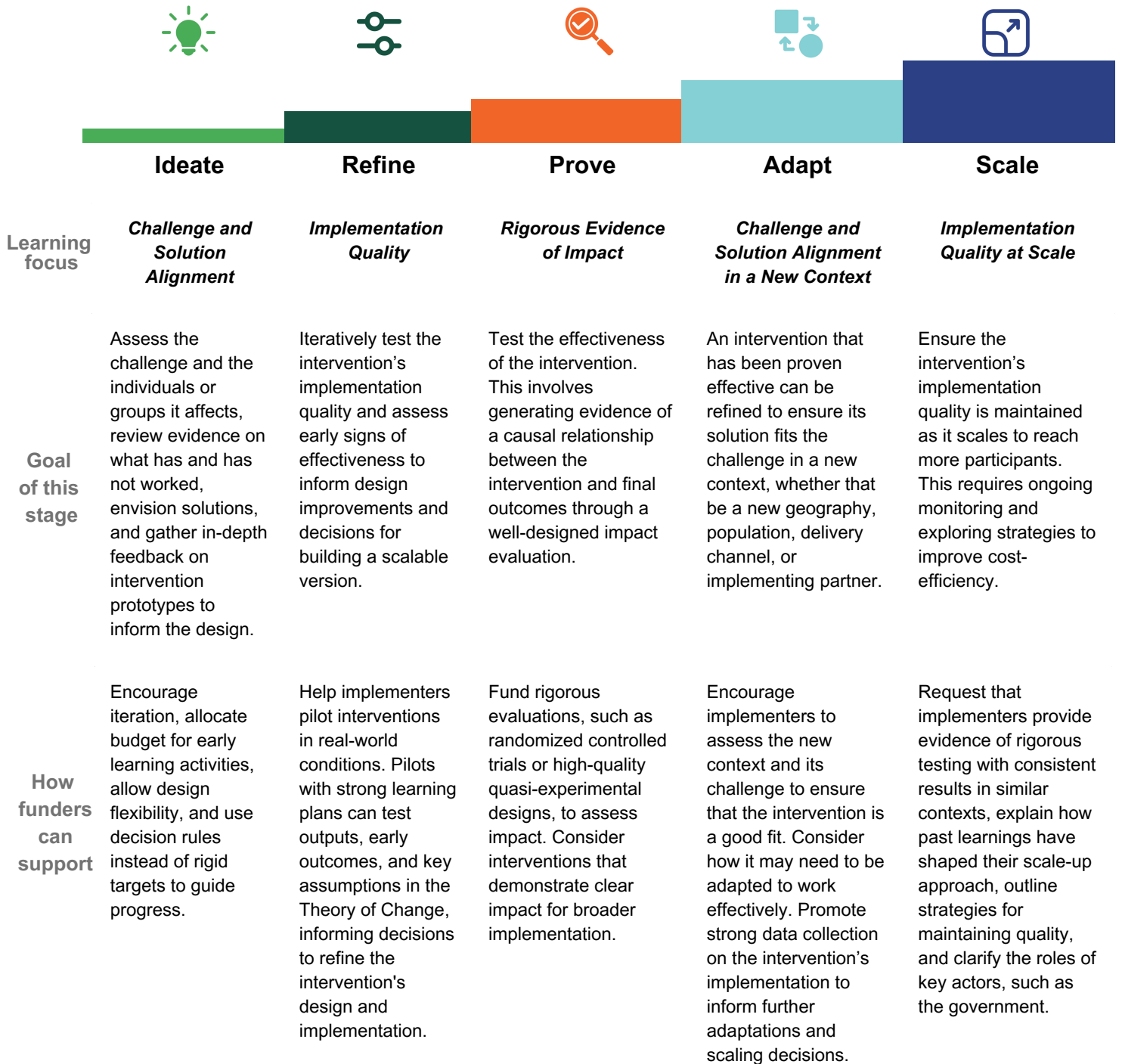


Enabling Stage-Based Learning: A Funder's Guide to Maximizing Impact

The Guide is designed to help funders optimize learning at each stage of an intervention's journey towards scale. The stage-based approach generates actionable insights for intervention improvement and future funding decisions, reducing unnecessary reporting. **This approach has the power to transform how funders engage with their partners and the projects they support, resulting in more cost-effective and scalable solutions.** The graph below provides a brief summary of the stage-based learning framework.

Scan the QR code below to access the full guide.



To maximize the impact of your funding through adaptive learning, we encourage you to explore the full guide. It offers practical advice on tailoring learning to each stage of an intervention's life cycle. Share this resource with your network and become a champion for Stage-Based Learning. Together, we can enable more impactful and cost-effective development interventions!

CONTACT US

rightfit@poverty-action.org

READ THE FULL GUIDE

