

Date
July 05, 2016



Technology-enabled Business Training for MSMEs

Evidence in Financial Inclusion: New Findings and their Applications
Manila
John Arun, IFMR LEAD



Principal Investigators:
Dr Shawn Cole,
Harvard Business School
Dr Antoinette Schoar,
MIT Sloan School of Management



Partners:





LISTAINITIATIVE

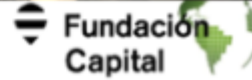
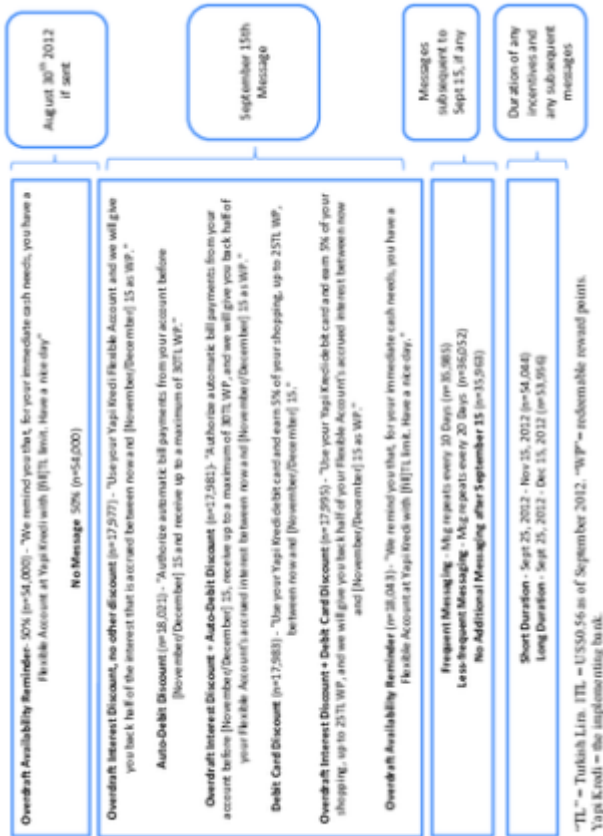
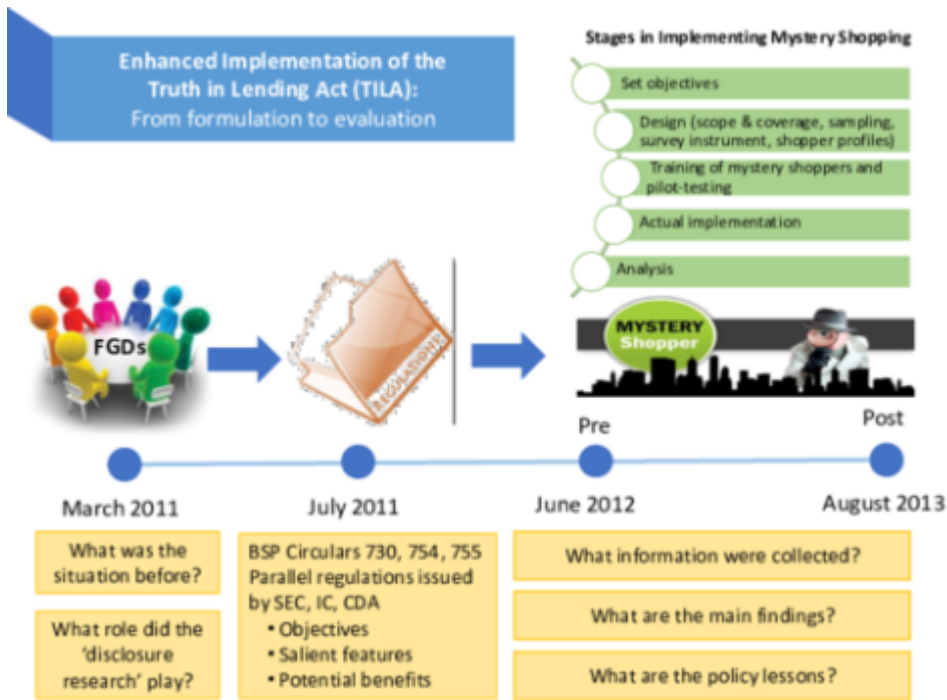


Figure 1. Experimental Design





Personalized Information as a Tool to Improve Pension Savings: Results from a Randomized Control Trial in Chile

Olga Fuentes, Jeanne Lafortune, Julio Riutort, José Tessada and Félix Villatoro

Evidence in Financial Inclusion: New Findings and their Applications

July 5, 2016 | Manila, Philippines

AGENDA

8:15-8:45 AM	Registration	
8:45-9:00 AM	Philippine National Anthem Welcome Remarks Narciso Sampedro-Balibiri [PPT] Country Director, Philippines, Innovations for Poverty Action Aftab Ahmed CEO, Citi-Philippines	
9:00-9:15 AM	Opening Remarks Amando M. Tetangco, Jr. Governor, Bangko Sentral ng Pilipinas	
9:15-10:00 AM	Keynote: Behavioral Insights and Experimentation for Financial Inclusion Dean Karlan Professor, Yale University and President & Founder, Innovations for Poverty Action Moderator: Nestor A. Espenilla, Jr. Deputy Governor, Bangko Sentral ng Pilipinas	In this session, attendees will hear about the importance of behavioral insights and evidence-based designed testing for creating and offering products that are appropriate for low-income consumers. They will also be introduced to some of the ways that testing can be accessible even to organizations without the resources to engage in a costly and long-term test.
10:00-10:15 AM	Coffee/Tea Break	
10:15-11:15 AM	Innovating Financial Education Matthew Bird [PPT] Professor, University of North Carolina John Arun [PPT] Project Manager, Small Enterprise Finance Centre, Institute for Financial Management and Research Learning Systems for Access and Development Moderator: Priscilla Wagh Program Manager, Financial Capability, Financial Inclusion Program, Innovations for Poverty Action	This session will explore interventions that take financial education most of the classroom and place it into the hands of learners directly—through the use of technology platforms. Researchers will discuss how digital channels can enable individualized, scalable education focused on better financial management, and share its impacts on the financial decisions of low-income households. Research Links: Data-Driven Decisions in Education (Matthew Bird) Bank of America, Founding Study, Global Financial Management Advice at Scale (John Arun)



Evidence in Financial Inclusion II: New Findings and their Applications

On July 6th in Manila, IPA and [Bangko Sentral ng Pilipinas](#) (with support from the Citi Foundation) co-hosted a workshop for 40 high- and mid-level policymakers and financial service providers interested in learning how rigorous evidence can help them better serve their customers. During the one-day event, attendees engaged in a series of discussions that encouraged them to think about how recent financial inclusion evidence applies to their institutions and how RCTs can be useful for decision-making. The event showcased evidence produced by evaluations funded by the Citi IPA Financial Capability Research Fund and included presentations by Amando Tetangco, Governor of Bangko Sentral ng Pilipinas; Aftab Ahmed, CEO of Citi Philippines; and Dean Karlan, professor at Yale University and President of IPA. The agenda and PowerPoint presentations from the event are available below. This workshop was the second in a series of three; the other two workshops were held in [Bogota](#) and [Mumbai](#).

IPA Welcome Remarks PPT (See attached below)

Opening Remarks

Session 2: Innovating Financial Education

- [Tablet-Based Financial Education](#) (Matthew Bird) PPT
- [Rules of Thumb: Providing Timely Useful Financial Management Advice at Scale](#) (John Arun) PPT

Session 3: Remittances and Financial Capability of Overseas Workers

- [Financial Education vs. Access to Finance in Transnational Households](#)

Session 4: Information Design

- [Enhanced Implementation of the Truth in Lending Act](#) (Mynard Mojica) PPT
- [Unshrouding Effects on Demand for a Costly Add-on: Evidence from Bank Overdrafts in Turkey](#) (Dean Karlan) PPT

Session 5: Encouraging Long-term Savings

- James Choi's [research page](#)
- [Personalizing Information to Improve Retirement Savings](#) (Julio Riutort) PPT







City

Manila

Country

Philippines