

## Staff

Peter LeFrancois  
Deputy Country Director, Kenya

Suleiman Asman  
Regional Director, East Africa and Asia

Nathan Fiala  
University of Connecticut

Caroline Nyuguto  
Associate Research Engagement Manager

Eric Ochieng  
Associate Research Manager

John Ochieng Otieno  
Policy Manager

Jane Mariara  
Executive Director, Partnership for Economic Policy (PEP)

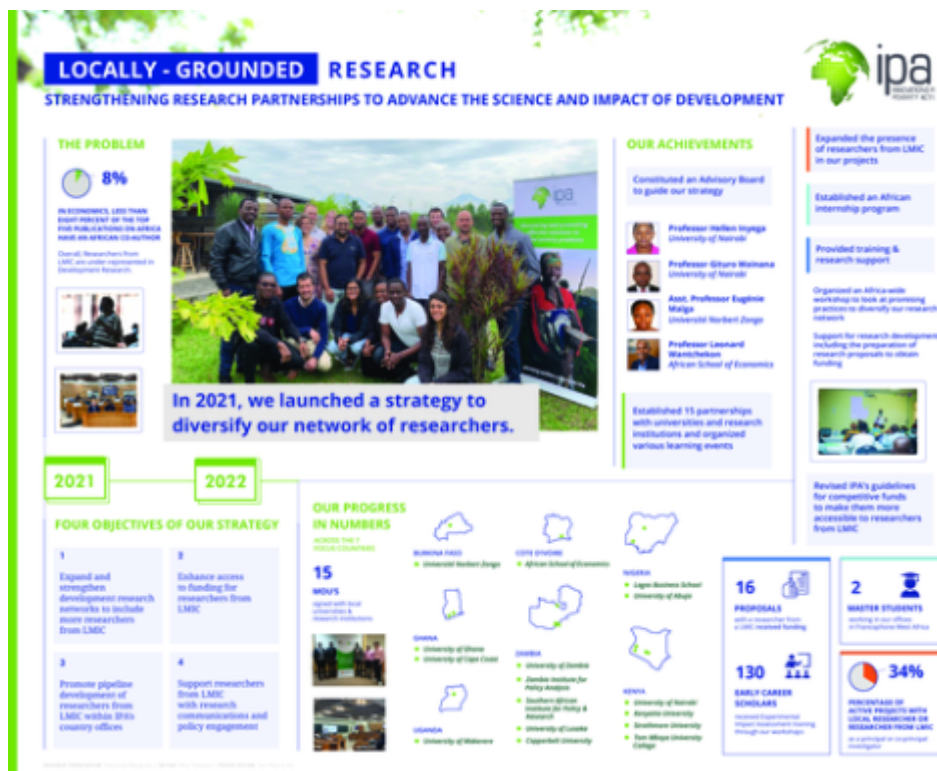
Hellen Inyega  
University of Nairobi

## Start Date

September 28, 2022

## End Date

September 29, 2022





#### Matchmaking Event concept

**Title of event:** Driving locally grounded research through strong partnerships and networks

**Partner:** University of Nairobi

**Venue:** University of Nairobi Towers, 5<sup>th</sup> floor

**Date:** 28th & 29th September 2022

#### Overview

Kenya is one of the countries implementing IPA's Researcher Diversification Strategy, an initiative that seeks to grow the number of local researchers in the countries that IPA works in, in efforts to promote a more diverse and inclusive organization. We recognize most research continues to be produced in the Global North. Africa, for example, produces only 1 percent of the world's research output and has only 198 researchers per million people, compared to 455 per million in Chile and more than 4,500 per million in the United Kingdom and the United States<sup>1</sup>.

We believe that our ability to generate high-quality evidence and advance evidence-informed programs and policies is dependent on engaging local researchers who are from the countries where the research and policy work takes place<sup>2</sup>.

#### About the matchmaking event.

One of IPA's strategies to support researcher diversification is to act as a convener to facilitate learning and skills development and foster relationship-building among local researchers and partners.

IPA Kenya country office is organizing an in-person matchmaking event that will bring together the local researchers, Southern researchers, representatives of donor institutions, and policymakers to network, learn from each other and establish relationships that will advance the participation of local researchers in generating policy-relevant evidence.

#### Purpose/Objective

The broad objective of this matchmaking event is to: *Strengthen IPA's engagement and collaboration with local researchers in generating research for impact.*

We hope to achieve the following outcomes during this event.

1. Discuss the gaps and challenges that local researchers face when fundraising for research and share tips for standing a better chance of being funded.
2. Understand the donor perspective on local researcher engagement and support.
3. Identify similar interests within specific groups/researchers with a view of establishing a roadmap for building a community of local researchers.
4. Facilitate learning, networking, and deeper engagements between researchers and partners.

<sup>1</sup> Alan Christofides, "Africa Needs Another Million PhD Scientists to Develop Homegrown Solutions," Quartz Africa, accessed December 8, 2020, <https://qz.com/610612007/10-africa-needs-one-million-more-scientists/>

<sup>2</sup> Partnership for Economic Policy (PEP) Annual Report, 2011-2012.

## Locally-Grounded Research: Strengthening Networks and Partnerships

From September 28-29, IPA Kenya, in partnership with the University of Nairobi, hosted a physical matchmaking event on driving locally-grounded research through strong partnerships and networks. This was aligned with the broad objective of IPA's Researcher Diversification Strategy, which is to advance locally-grounded research and support scholars conducting development research in the countries where we work. The sessions covered a number of issues relevant to increasing researcher engagement from low- and middle-income countries, from network building and mentorship to strengthening the pipeline of researchers and accessing research funding.

### Presenters

- **Peter Lefrancois**, Acting Country Director, IPA Kenya

- **Suleiman Asman**, *Regional Director of East Africa, IPA*
- **Nathan Fiala**, *Associate Professor, University of Connecticut*
- **Berber Kramer**, *Senior Research Fellow, International Food Policy Research Institute*
- **Caroline Nyuguto**, *Associate Research Engagement Manager, IPA Kenya*
- **Eric Ochieng**, *Associate Research Manager, IPA Kenya*
- **John Ochieng Otieno**, *Policy Manager, IPA Kenya*
- **Jane Kabubo-Mariara**, *Executive Director, Partnership for Economic Policy*
- **Gituro Wainaina**, *Senior Lecturer, University of Nairobi*
- **Hellen Inyega**, *Associate Professor, University of Nairobi*

For more information, see the agenda [here](#) and a visual explainer on IPA's Researcher Diversification Strategy [here](#).

## Location

University of Nairobi

## City

Nairobi

## Country

Kenya